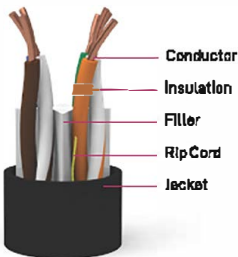
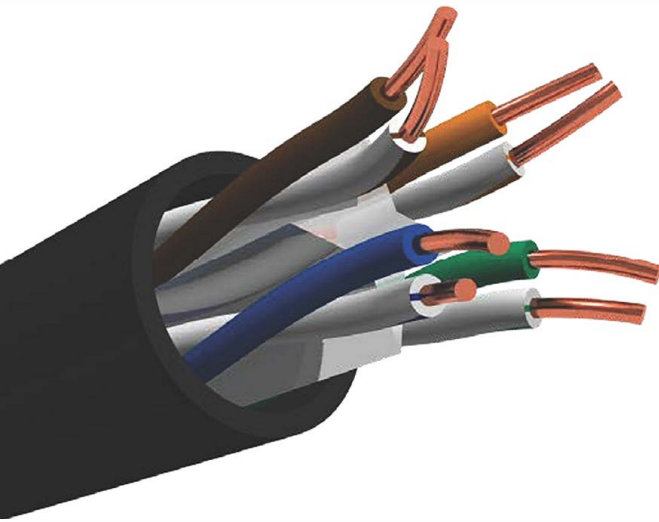


CABLE U/UTP C6 (Outdoor)



CABLE CONSTRUCTION

| | | |
|--|---------------------------------|--|
| Conductor | Material | SOLID Bare Copper |
| | Nom.D.D (mm) | 0.55 ± 0.005mm. 23AWG x 4P 0.51 ± 0.005mm. 24AWG x 4P |
| Insulation | Material | HPDE |
| Insulation Diam. # | | 0.98 ± 0.03mm |
| Thickness | | AVG: 0.55mm, MIN:0.29mm |
| Twisted Pair (4) Unshielded | Filler | PE: 4.8 * 0.4 |
| | Rip Cord | Yes |
| Jacket PE - RoHS | Thickness | AVG: 0.55mm ± 0.05mm |
| | Outer Diam.# | 6.0 ± 0.40mm |
| | Jacket Color (standard) | Black: RAL 9011 ● |
| Code Color | 1 White/Blue | 2 White/Orange |
| | 3 White/Green | 4 White/Brown |
| Dimension - Weight | 36x36x30.5cm - 36Kg/Km | |
| Packing | 1 Wooden Drum (& Carton Box, 2) | |
| Packing Length | 305/500/1000 ± 1.0m | |

PRODUCT DESCRIPTION

• Standard Reference:

ISO/IEC 11801-2:2011
IEC 61156-5:2012
EN 13501-6
EN 50173-1:2011
EN 50173-2:2007 including amendment A1:2010
EN 50288-9-1:2012
EN 50288-4
EN 50575:2014+A1:2016
EN 60332-1[1,2], 60332-3C, 60754-1[1,2], 61034-1[1,2]
ANSI/TIA-568-6-2:2009

• Rated temperature: 90°C

• Installation temperature:
-30°C ~ +50°C

• RoHS complied

• Application:

VoIP, ISDN
Token, 100M T/PDM
Analog and Data Video
TR-16 Active and Passive
115M/662m/1.2GATM
IEEE802.3: 100Base, 100Base-T,
1GBase-T

CRP Class:



TECHNICAL PERFORMANCE (100m)

| Frequency (MHz) | RL(dB) min. | Attenuation (dB/100m) max. | NEXT (dB/100m) | ACR (dB) |
|-----------------|------------------|----------------------------|--------------------|------------------|
| 1 | 20.0 | 2.0 | 74.3 | 72.28 |
| 4.0 | 23.0 | 3.8 | 65.3 | 61.49 |
| 8.0 | 24.5 | 5.3 | 60.8 | 55.43 |
| 10.0 | 25.0 | 6.0 | 59.3 | 53.35 |
| 16.0 | 25.0 | 7.4 | 56.2 | 48.68 |
| 20.0 | 25.0 | 8.5 | 54.8 | 46.31 |
| 25.0 | 24.3 | 9.5 | 53.3 | 43.83 |
| 31.25 | 23.6 | 10.7 | 51.9 | 41.20 |
| 62.5 | 21.5 | 15.4 | 47.7 | 31.98 |
| 100 | 20.1 | 19.8 | 44.3 | 24.50 |
| 200 | 18.0 | 29.0 | 39.8 | 14.60 |
| 250 | 17.3 | 32.8 | 38.3 | 9.48 |
| Frequency (MHz) | ELFEXT (dB/100m) | PdNEXT (dB/100m) | PdELFEXT (dB/100m) | Impedance (Ohms) |
| 1 | 67.8 | 72.3 | 64.8 | 100±15 |
| 4 | 55.8 | 63.3 | 52.8 | |
| 8 | 49.7 | 58.8 | 46.7 | |
| 10 | 47.8 | 57.3 | 44.8 | |
| 16 | 43.7 | 54.2 | 40.7 | |
| 20 | 41.8 | 52.8 | 38.8 | |
| 25 | 39.8 | 41.3 | 36.8 | |
| 31.25 | 37.9 | 49.9 | 34.9 | |
| 62.5 | 31.9 | 45.4 | 28.9 | |
| 100 | 27.8 | 42.3 | 24.8 | |
| 200 | 21.8 | 37.8 | 18.8 | |
| 250 | 19.8 | 36.3 | 16.8 | |

CHARACTERISTICS

| | |
|---|-------------------------------|
| Max. Conductor DC Resistance at 20°C (Ω/Km) | < 95 |
| Rated Temperature (°C) | 100°Cx24hx7d # -20°±2°Cx4h |
| Rated Voltage (V) | 300V |
| Velocity Ratio | 68% |
| Delay (ns/100m) | ≤ 45 |